

Afton State Park

Washington County, Minnesota

Scale 1:10,000 Contours 5 meters



0 100 200 300 400 500 meters

Green

Magnetic North



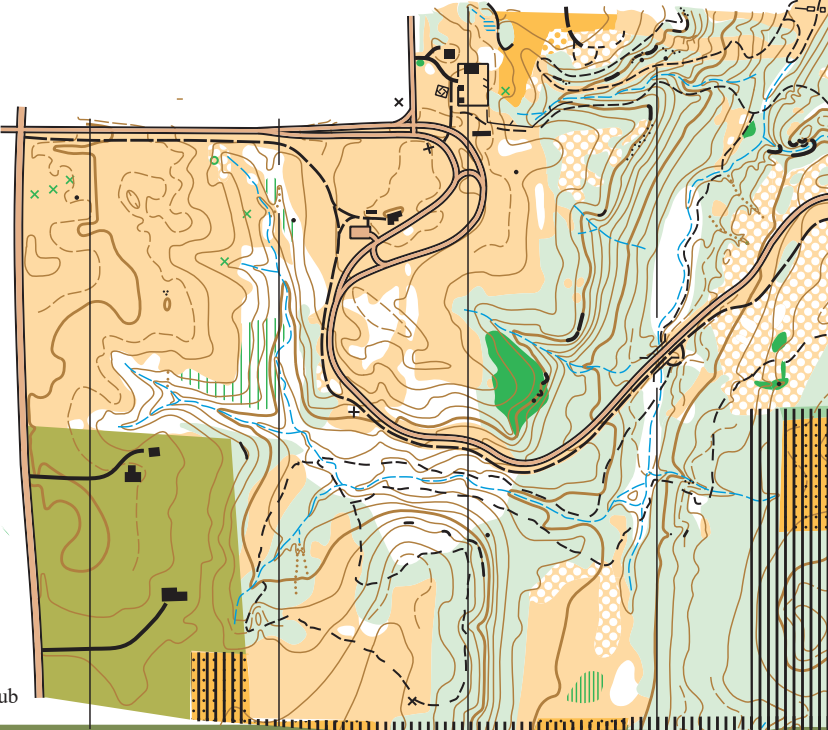
Legend

- | | | | |
|--|-------------------------------------|--|--------------------------------------|
| | paved road, parking area | | open land with scattered trees |
| | dirt road | | rough open land/prairie |
| | vehicle track, bridge/tunnel | | rough open land with scattered trees |
| | wide footpath, horse/bike trail | | open sandy ground |
| | small footpath, mountain bike trail | | forest: easy running |
| | groomed ski trail (with one way) | | forest: slow running |
| | indistinct footpath | | undergrowth: slow running |
| | major power line | | forest: difficult to run |
| | power line | | undergrowth: difficult to run |
| | ski lift | | vegetation: difficult to walk |
| | fence, high fence | | vegetation boundary |
| | ruined fence | | single tree, conspicuous tree |
| | building, small building, ruin | | earth bank, pit |
| | man-made features, camp site | | small erosion gully, erosion gully |
| | passable rock face | | small earth wall |
| | impassable or dangerous cliff | | knoll, small knoll |
| | boulder: small, large | | depression, small depression |
| | stony ground, boulder group | | contour |
| | lake, pond | | index contour |
| | seasonal marsh | | form line, slope tag |
| | intermittent stream | | private property, out-of-bounds |
| | small watercourse, footbridge | | cultivated land, out-of-bounds |
| | drinking fountain | | |

Notes:
Permission should be sought from the park authority (Afton State Park), Afton Alps Ski area, and other land owners before using the public or private terrain of this map. Legal boundaries are approximate. Stay away from private and out of bounds areas. Unmapped hazards (such as barbed wire, holes etc.) exist. MNOC is not liable for any damages as a result of use of this map. No copying of this map is allowed.

For more information on orienteering, please visit the MNOC web site <http://www.mnoc.org>

Base map:
Stirling Surveys, 1996
Field survey:
Plamen Djambazov, 1997
Ian Harding 2019
Cartography:
Plamen Djambazov
Ian Harding



Afton Regular + JROTC Meet 4/27/19			
	Green	5.3 km	190 m
△			
1	228		
2	227		
3	220		
4	219		
5	223		
6	213		
7	230		
8	214		
9	229		
10	217		
11	231		
12	218		
⊕		260 m	⊗

Copyright MNOC 2019



Minnesota Orienteering Club