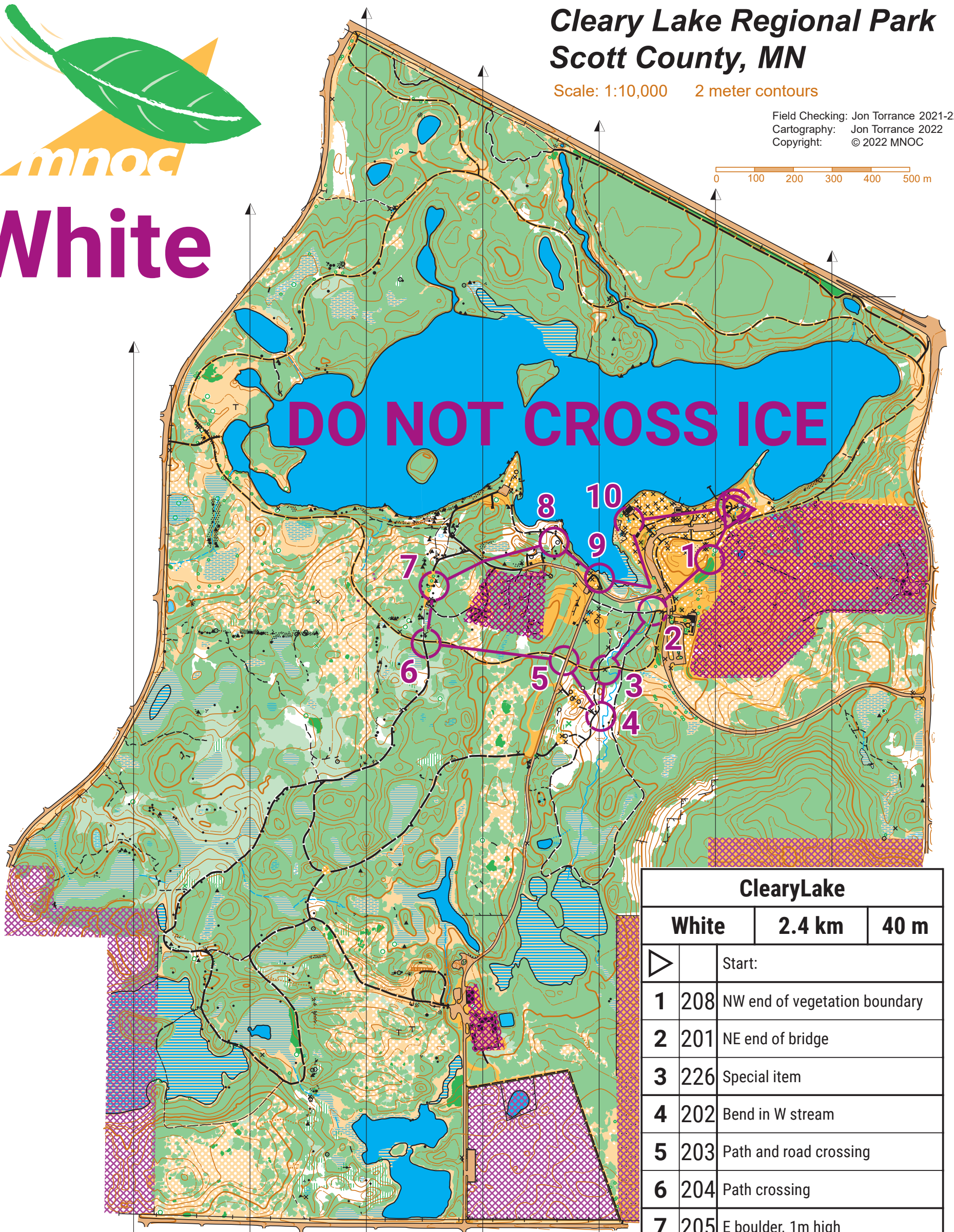


White

Cleary Lake Regional Park Scott County, MN

Scale: 1:10,000 2 meter contours

Field Checking: Jon Torrance 2021-22
Cartography: Jon Torrance 2022
Copyright: © 2022 MNOC



ClearyLake		
White	2.4 km	40 m
▶		Start:
1	208	NW end of vegetation boundary
2	201	NE end of bridge
3	226	Special item
4	202	Bend in W stream
5	203	Path and road crossing
6	204	Path crossing
7	205	E boulder, 1m high
8	206	W part of hill
9	207	Vegetation boundary
10	220	Well
Navigate 270 m to finish		

Legend

- Paved road, road, parking area
- Vehicle track, footpath
- Small footpath, less distinct footpath
- Fence, high fence, ruined fence
- Wall, ruined wall, small tower
- Building, small building, ruin
- Canopy, water fountain
- Man-made feature, fire ring
- Boulders: small, medium
- Boulder cluster, rockpile
- Lake/pond, uncrossable marsh
- Marsh, seasonal marsh
- Watercourse, small watercourse
- Seasonal watercourse, narrow marsh
- Cliff, earth bank, pit
- Ditch, erosion gully, broken ground
- Hill, knoll, small knoll, elongated knoll
- Depression, small depression
- Contour line, index contour
- Form line, tag line
- Stony ground, sandy ground
- Open land, open w/scattered trees
- Rough open land, w/scattered trees
- Open forest (white)
- Forest: slow, difficult
- Fight, cultivated land
- Undergrowth: slow, difficult
- Narrow ride
- Large tree, small tree, rootstock
- Out-of-bounds areas
- Power line

Permission should be sought from Three Rivers Park District and other land owners before using the public or private terrain of this map. Legal boundaries are approximate. Stay away from private and out of bounds areas.

Unmapped hazards (such as barbed wire, holes etc.) exist.

MNOC is not liable for any damages as a result of use of this map. Unauthorised copying of this map is not allowed.

Off trail travel only by special permit from 3RPD. Obey all park ordinances.