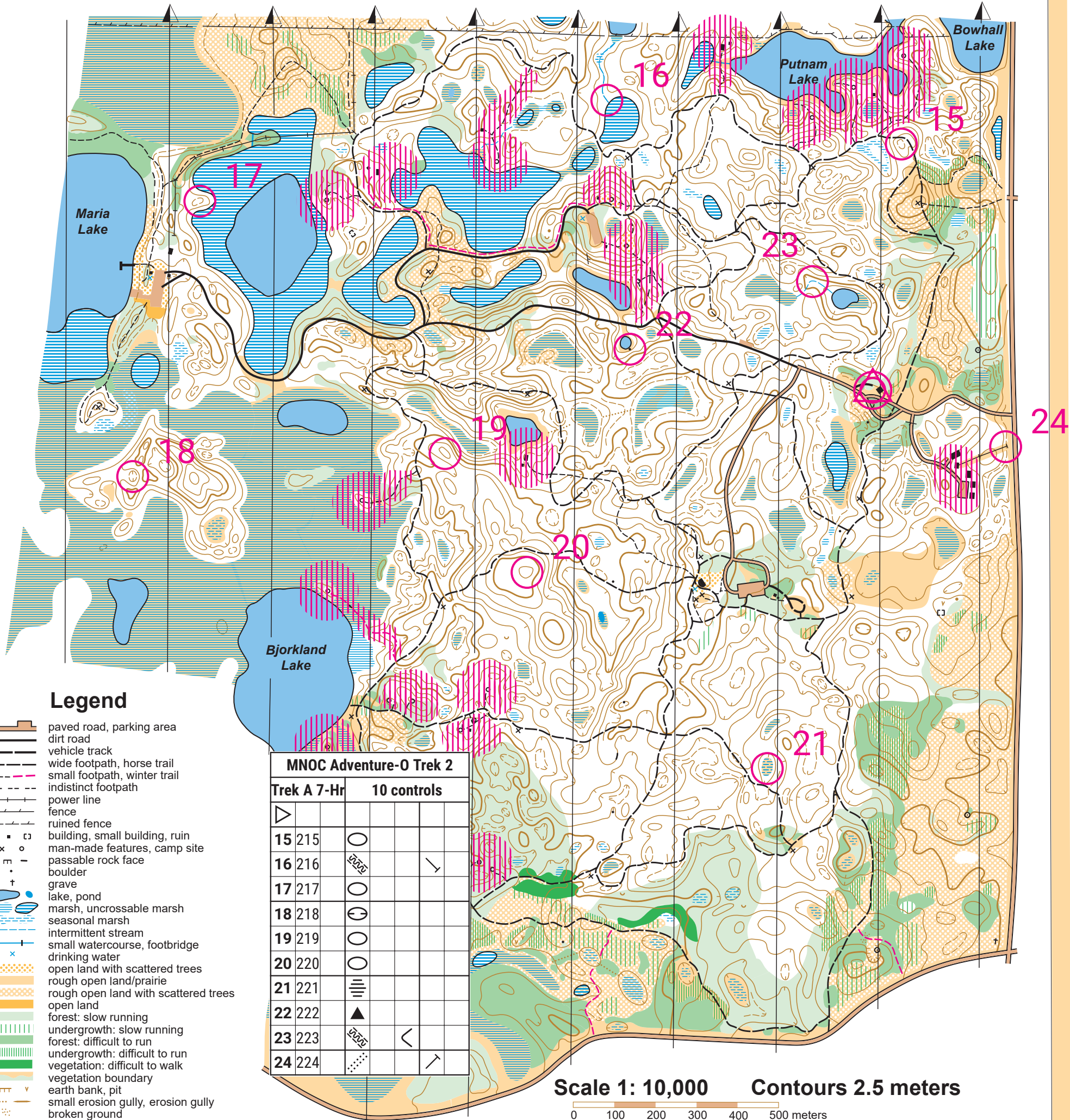




# Lake Maria State Park

# Trek A 7-Hr



- Legend**
- paved road, parking area
  - dirt road
  - vehicle track
  - wide footpath, horse trail
  - small footpath, winter trail
  - indistinct footpath
  - power line
  - fence
  - ruined fence
  - building, small building, ruin
  - man-made features, camp site
  - passable rock face
  - boulder
  - grave
  - lake, pond
  - marsh, uncrossable marsh
  - seasonal marsh
  - intermittent stream
  - small watercourse, footbridge
  - drinking water
  - open land with scattered trees
  - rough open land/prairie
  - rough open land with scattered trees
  - open land
  - forest: slow running
  - undergrowth: slow running
  - forest: difficult to run
  - undergrowth: difficult to run
  - vegetation: difficult to walk
  - vegetation boundary
  - earth bank, pit
  - small erosion gully, erosion gully
  - broken ground
  - knoll, small knoll
  - depression, small depression
  - contour
  - index contour
  - form line, slope tag
  - out-of-bounds
  - winter snow shoe route

Base map: Minnesota Orienteering Club, 1991  
 Field survey: Plamen Djambazov, May 2000  
 Cartography: Plamen Djambazov  
 Ian Harding 2019

©2019 Minnesota Orienteering Club  
 For more information on the sport of orienteering,  
 please see the MNO web site <http://www.mnoc.org>

Please stay out of the remote campsites and cabins areas and their access trails marked by